
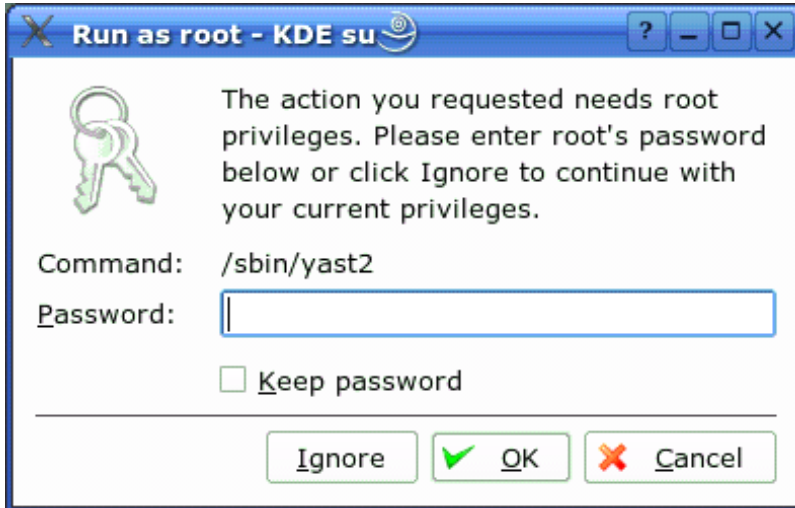


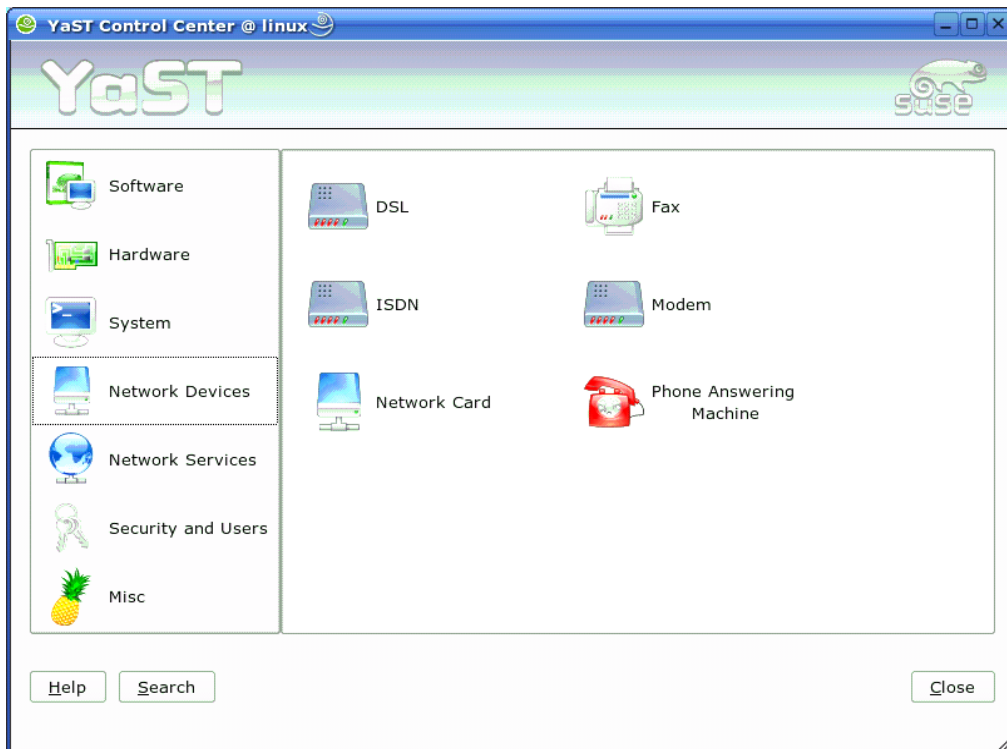
To start Click on the start menu icon  “The green ball with the gecko head” at the lower left of the screen. This will open the start menu – in this menu select “System” this will open another menu – at the very bottom of this menu you will see “Yast2” - click on that icon... You will see the following box – asking for your “Root” Password.... Please enter it now.



This set of instructions has assumed that your computer did not automatically start the install process when the modem was first connected.

You may be presented with this screen within a minute or two of plugging in the modem your ISP gave you. If this happens some steps will be skipped. Don't worry they are being automatically completed by your system.

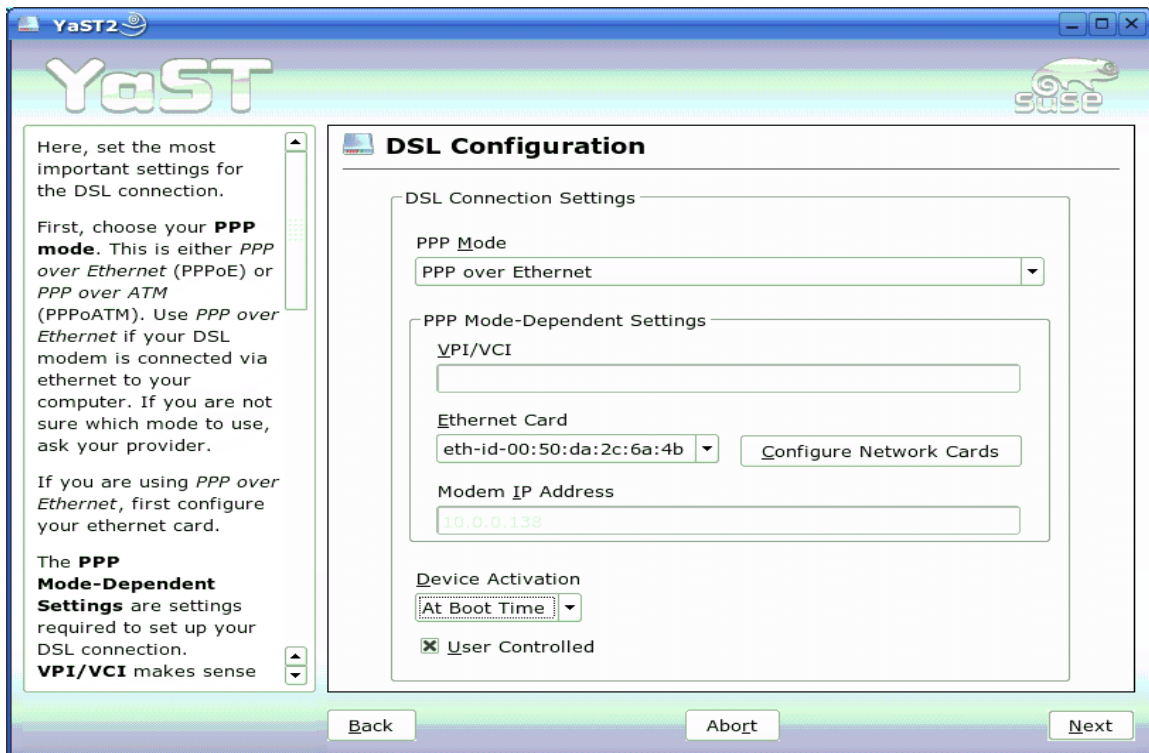
The next you will see is the Yast Control Center screen Next move to the Network Devices icon and click on it – now you should have the screen shown below. Both ACS DSL and GCI cable modems use the same set up – Click on the icon labeled DSL.



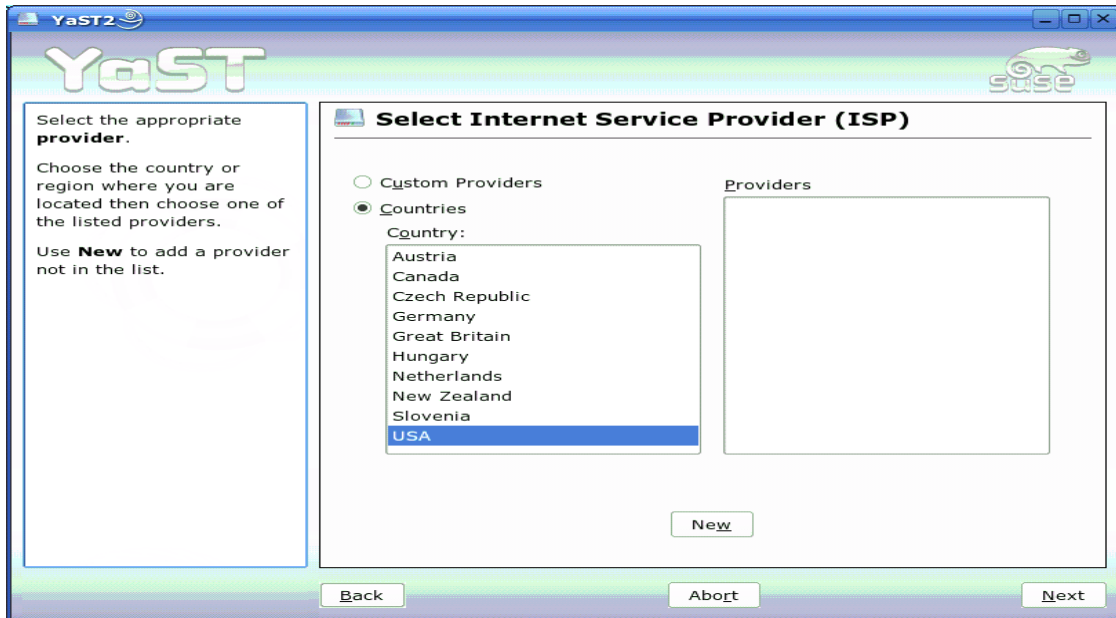
Next screen is labeled “DSL Configuration Overview” The one pictured here has no devices displayed if your screen has a device displayed – click on “Edit” button – if no device is displayed click on the “Add” button...



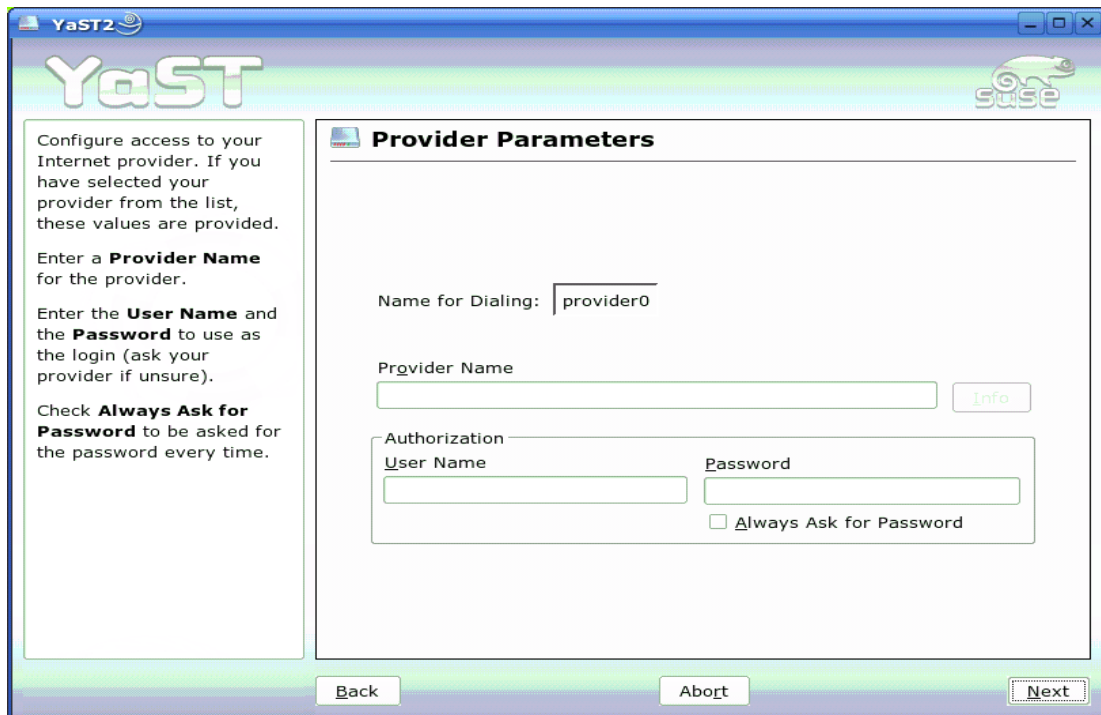
Next is the screen Labeled “DSL Configuration” One this screen make sure that the PPP mode is set to PPP over Ethernet and that Device activation is set to “At Boot Time” once these are correct click on the “Next” button...



If you get the Select Internet Service Provider (ISP) screen select USA and then click on the “Next” Button.



The next screen Labeled "Provider Parameters" is where you will put in the information that either GCI or ACS provides you. Do not change the Name for Dialing. In provider name enter ACS or GCI or the name of another provider -- In User name and Password fields enter the User name and Password that your ISP gave you.



Now you will click on the "Next" and "Finish" buttons until all the screens are closed. Within a minute or two of completing this you should be able to log on to the Internet. Note: do not use the small "X" box at the top of the screen to close any of these screens – as doing so will cause problems with the proper working of your Internet connection.

What to do if you still do not have an Internet connection.

First check that your fire wall is working correctly

You may access your firewall through the Yast control center under "Security and Users" be sure that it is set to Service start when booting and that under "Interfaces" the network card is set to "External Zone". A setting of "No Zone" will block all efforts to use the Internet.

For a quick test to see if the firewall is causing problems you can click on the "Stop Firewall Now" button. If the firewall is the problem you will now have access to the Internet. **DO NOT** leave the firewall turned off. The problem must be fixed and the firewall turned back on. While Linux is more secure than Windows (most Windows computers without a firewall will fall victim in about an hour) it will be over run by some thug given enough time left unprotected on the Internet.

If you cannot fix your problem you may try the following sources for help. Try calling your ISP -- Both ACS and GCI have people working for them that understand Linux. However, the person answering the phone will probably not be that person. Be prepared to wait for a call back, and if the help tech tries to tell you that they just don't do that and wants to end the call, ask for their supervisor. If the problem is beyond their ability to fix over the phone -- you have one more place to turn in Anchorage.

AKLUG Friday night meetings. There is a group of Linux Gurus that meets to help regular people with Linux only problems. The only price is that you sit there with them as they work on your system - "so that you may learn something". You will need to bring in your computer box with the mouse. You will not need to bring in the monitor (screen). This meeting is held every Friday night starting at about 7:00 to 10:00pm. Location is the back workroom of Nine Star in the Muldoon mall. This is right next door to The KCI Head Start location in that mall. It is best to drive around back of the mall and enter through the back door. This will be the door just before the fenced playground and there will be several cars parked near it. You want to use the back door as the front door to the mall are locked at 8:00pm as well the distance to carry your computer is much shorter through the back door.

TERMS USED

- ISP **I**nternet **S**ervice **P**rovider Usually ACS or GCI here in Anchorage.
- Firewall A program that limits network access -- It blocks the access to your computer from places like the Internet. Properly set up it lets you surf the net while stopping others from doing bad things to your computer.
- Start Menu Is the menu usually opened by the "Start button" located at the lower left corner of your screen. In Linux it lists all the programs that can be started by a mouse click.